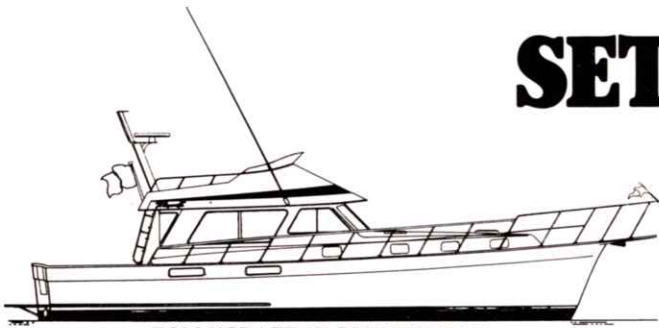


# WESTERBEKE 8 KW MARINE DIESEL GENERATOR SET



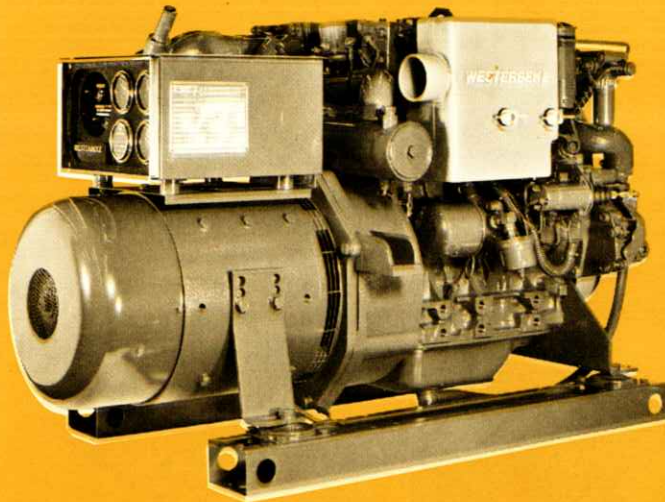
TOLLYCRAFT 48' CONVERTIBLE

A small, reliable, smooth running Generator Set for all your shipboard needs; 120 volt electrical power at the turn of a switch for: Electric Cooking, Microwave Oven, Refrigeration, Cabin Appliances, Power Tools, and Navigation/Communication Equipment. Like all Westerbeke Generator Sets, it is fresh water cooled with an Engine mounted Heat Exchanger. The Engine and Generator are connected through special "Commonized" Drive Discs, Flywheel, and Flywheel Housing into a compact, carefully aligned Generator Set. The complete unit is mounted on lightweight rails through soft flexible Isolator Mounts that prevent the transfer of vibration. A lightweight removable Drip Tray is fitted under the unit between the mounting rails. The Engine is fitted with an Electric Fuel Pump and Self-Bleeding Fuel System that eliminates hand priming and bleeding. Cast iron cylinder head and block plus swirl type combustion chamber plus tuned air intake silencer produce quiet running unmatched in the industry.

The Westerbeke 8 is lightweight, safe, dependable, durable, and economical to operate. Designed to operate at a quiet 1800 RPM, the Westerbeke 8 offers 3 cylinder 4 cycle smoothness to provide electrical conveniences usually found only on larger boats.

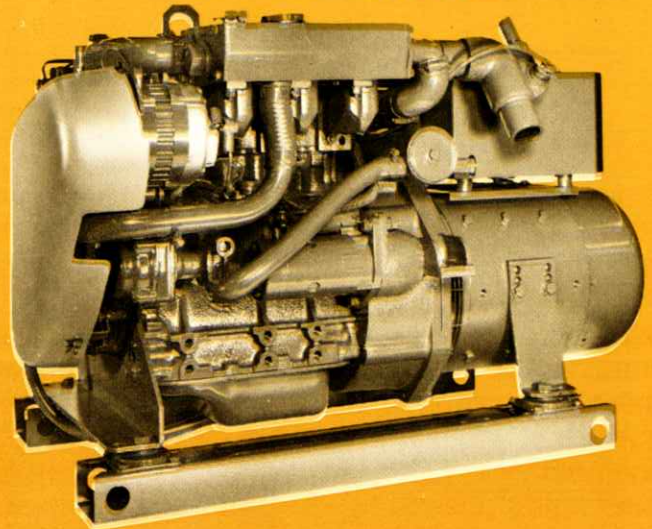
**FOR POWER OR SAILBOAT ... A NEW SERIES OF DIESEL GENERATOR SETS FROM WESTERBEKE.**

## MORE COPPER, LONGER STACK, PRODUCES A FULL 8KW



- HEAT EXCHANGER WITH REMOVABLE END CAPS
- AIR INTAKE SILENCER
- ELECTRIC FUEL LIFT PUMP
- FUEL FILTER
- HIGH WATER TEMP & LOW OIL PRESSURE AUTOMATIC SHUT DOWN
- ON PLANT SAFETY STOP SWITCH
- FLEXIBLE MOUNTS ATTACHING TO LIGHT-WEIGHT MOUNTING RAILS
- REMOVABLE DRIP TRAY

- BELT GUARD
- 50 AMP BATTERY CHARGING REGULATED ALTERNATOR
- EASILY ACCESSIBLE SEA WATER PUMP
- GEARED STARTER MOTOR
- FRESH WATER COOLED 2 PASS MANIFOLD
- WATER INJECTED ELBOW (FOR 1 7/8" EXH. HOSE)
- HIGH EXHAUST TEMP AUTOMATIC SHUT DOWN
- FIVE FUNCTION INSTRUMENT PANEL



**GENERATORS: 3, 4.4, 6, 8, 8g, 11, 12.5, 15, 20, 25, 32, 45 kw's**

**Fresh Water Cooled Diesel and Gasoline Generators from Westerbeke.**

# WESTERBEKE 8 KW MARINE DIESEL GENERATOR

**WESTERBEKE 8 KW**

**DESIGN:** Four pole revolving armature, inherently regulated, self limiting, rectifier excited, A.C. slip rings, single bearing design.

**VOLTAGE REGULATION:** ±7% no load to full load.

**FREQUENCY REGULATION:** 3 Hertz (5%) no load to full load.

**INSULATION:** Class F as defined by NEMA MGI-1.65

**TEMPERATURE RISE:** Within NEMA MGI-22.40 definition when operating @ full load.

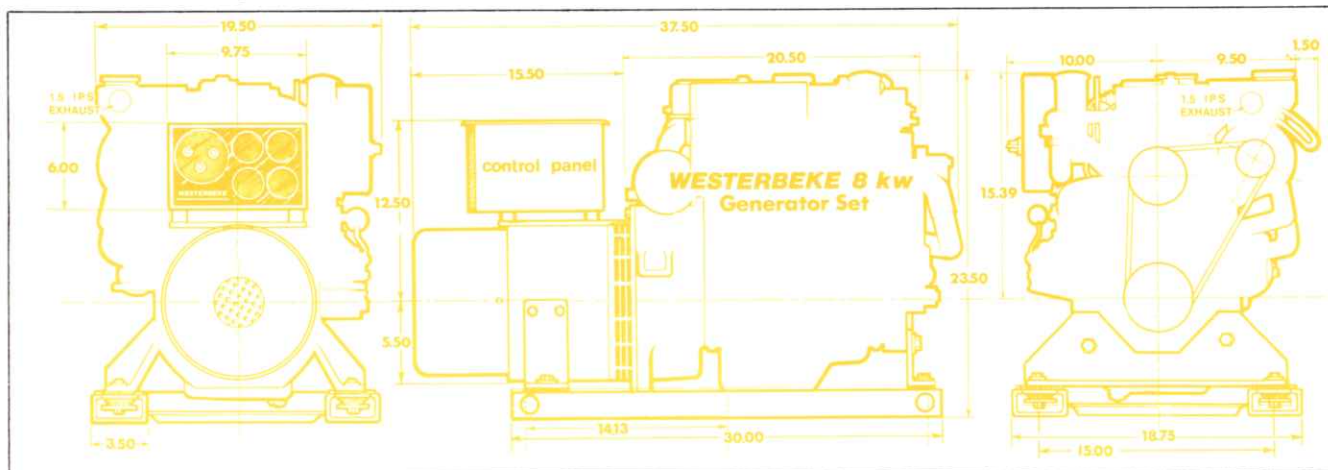
**COOLING:** Centrifugal blower, direct connected.

**RADIO INTERFERENCE LEVEL:** Capacitors minimize interference within the limits of most marine applications.

**ARMATURE:** Balanced laminated steel, double dipped and baked.

ELECTRICAL CHARACTERISTICS						RATINGS		DERATINGS	ENGINE	
Model	Volts	Amps	Hertz	Phase	Wire	Power Factor	KW		RPM	Start
8.0-614*	120/240	34	60	1	4	1.0	8	3.5% each 1000 feet above sea level.	1800	Remote
8.0-634	120/240	24	60	3	4	.8	8	1% for each 10° Fahrenheit above 85° Fahrenheit ambient.	1800	Remote
6.0-514*	120/240	25	50	1	4	1.0	6	10% for continuous duty.	1500	Remote
6.0-534	120/240	18	50	3	4	.8	6		1500	Remote

\*Reconnectable to 120 Volts @ twice the amperage.

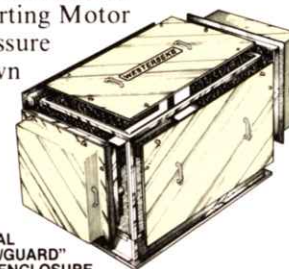


## ENGINE

Engine Type . . . . . 3 cyl, 4 cycle, water cooled, naturally aspirated, vertical overhead valve, diesel engine  
 Bore & Stroke . . . . . 2.87" x 3.07" (73mm. x 78 mm.)  
 Displacement . . . . . 60 cubic inch (.979 litre)  
 Compression ratio . . . . . 23 to 1  
 Cooling water capacity . . . . . 5 Qts.  
 Fuel Injection Pump . . . . . Bosch Type with Individual plunger for each cylinder  
 Injectors . . . . . Pintle type  
 Combustion Chamber . . . . . Swirl type for easy starting and quiet operation  
 Total weight . . . . . 520 lbs.  
 Governor . . . . . Mechanical centrifugal type  
 Fuel filter . . . . . Paper element type  
 Lub. oil filter . . . . . Full flow, spin on, paper element type  
 Lub. oil capacity with filter . . . . . 3.3 Qts.  
 Starting motor . . . . . Geared electric motor, 12 Volt.  
 Starting aid . . . . . 12 Volt sheathed type glow plug fuel pump . . . . . Electric plunger type  
 Rated RPM . . . . . 1800  
 Max. HP at rated RPM . . . . . 14 HP  
 Full load fuel consumption approx. . . . . 0.9 GPH  
 Exhaust elbow connection O.D. . . . . 1 15/16"  
 Sea water hose I.D. . . . . 7/8"

## STANDARD EQUIPMENT

12 volt 50 Ampere Alternator • Coolant recovery tank  
 Fresh Water Cooling System • Operators Manual  
 Vibration Isolators • Control Panel • Water Injected  
 Exhaust Elbows • Drip Trays • Belt Guards  
 Air Intake Silencer • 12 volt Starting Motor  
 High Water Temp. Low Oil Pressure  
 High Exh. Temp. Auto Shutdown



## OPTIONAL EQUIPMENT

Hydro Hush Silencer • "Sound/Guard"  
 Remote Instrument Panel • 15' Cable for remote Panel  
 Ship to Shore Transfer Switch

CALL YOUR WESTERBEKE REPRESENTATIVE

OR CONTACT THE . . .



# J. H. WESTERBEKE CORP.

Avon Industrial Park, Avon, MA 02322, (617) 588-7700  
 Cable: Westcorp, Avon, Telex: 92-4444