

WESTERBEKE 30

marine diesel engine

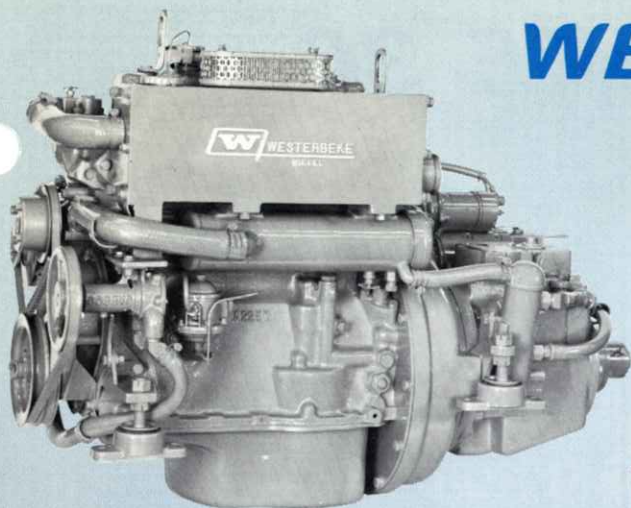
formerly
FOUR-91

The four cylinder WESTERBEKE 30 is one of the smoothest, quietest marine diesels available.

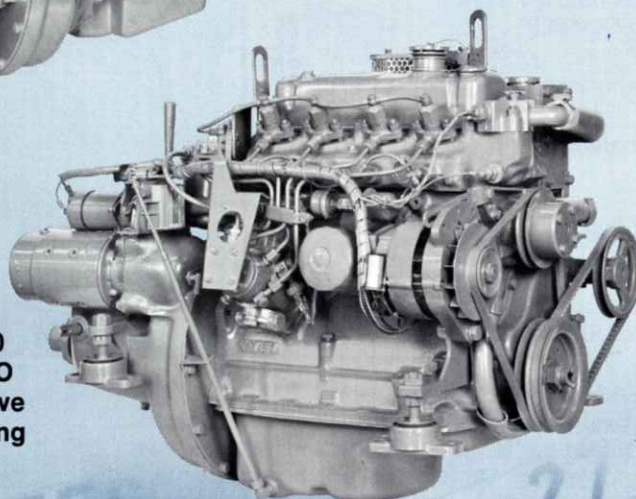
Its closed circuit system cools both engine block and exhaust manifold with fresh water, preventing seawater-to-engine contact, reducing corrosion and prolonging engine life.

The WESTERBEKE 30, at 25 horsepower, is ideal for most cruising boats in the popular 35 to 40 foot range. It has been accepted by both custom and major stock boatbuilders. They find that the plug-in engine pre-wiring and the many factory installed options save time in construction.

The WESTERBEKE 30 is quickly becoming one of the most popular engines in our line for original installation and repowering.



WESTERBEKE 30
with Paragon P20
direct drive
hydraulic gear



WESTERBEKE 30
with Paragon SAO
manual direct drive
showing pre-wiring

PEARSON 35 by Bill Shaw



WESTERBEKE 30

SPECIFICATIONS

Type: Four cylinder four cycle vertical in-line diesel.

Displacement: 91 cu. in. Bore 2 $\frac{7}{8}$ " , stroke 3 $\frac{1}{2}$ " .

Power: 25 hp at 2500 rpm (see power curve).

Compression Ratio: 23:1.

Weight: 470 lbs. basic engine. Add gear weights opposite page for IOR weight.

Fuel Injection Equipment: CAV distributor type injection pump and CAV Pintaux nozzles working in conjunction with Ricardo Comet V combustion chambers.

Cylinder Block and Head: High quality iron castings, mono block.

Crankshaft: Forged steel, counter balanced.

Camshaft: Forged steel.

Connecting Rods: Forged steel.

Pistons: Aluminum.

Main Bearings: Three, tri metal, heavy duty.

Lubrication: Eccentric rotor pressure pump, camshaft-driven, supplies 60 psi pressure to all parts.

Exhaust Manifold: Fresh water cooled.

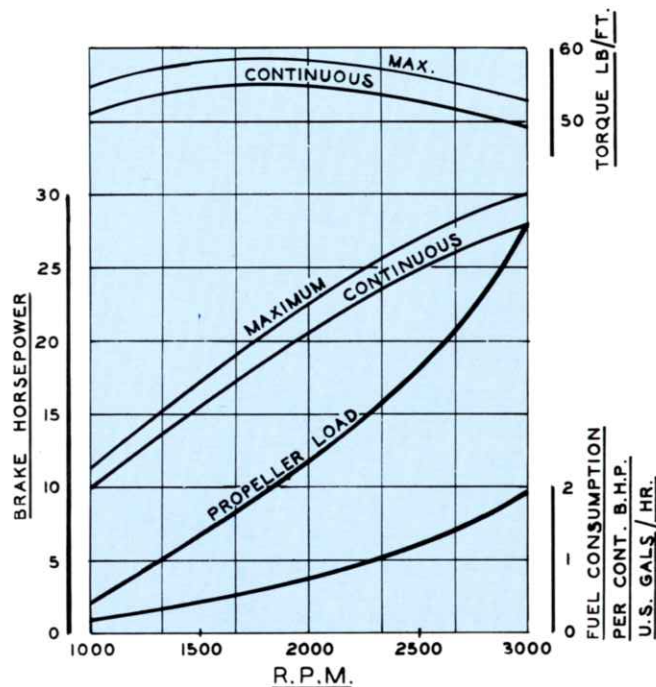
Cooling System: Closed circuit system with heat exchanger mounted.

Angle of Installation: 12° maximum.

Electrical System: 12-volt negative grounded system with 55 amp alternator.

Transmission: See individual gears opposite for specifications and propeller rotation.

Mounting: Flexible rubber mounts on 18" centers standard, 16" front mounts available.



STANDARD EQUIPMENT

Fresh water cooling system, with heat exchanger, surge tank and pumps mounted on engine; flexible engine mounts; propeller shaft coupling; clutch lever with lower extension for remote control where applicable; mounting brackets for control cables; spin-on full flow lube oil filter, lube oil cooler, sump pump and hose; engine-mounted secondary fuel oil filter, fuel lift pump with hand primer, flexible hoses for fuel inlet and return; cold weather starting aid; 12 volt, 55 amp alternator with transistor regulator; plug-in engine pre-wiring including pre-wired start panel with 10' cable; threaded 1 $\frac{1}{2}$ " IPS exhaust flange; fully illustrated instruction manual and parts list.

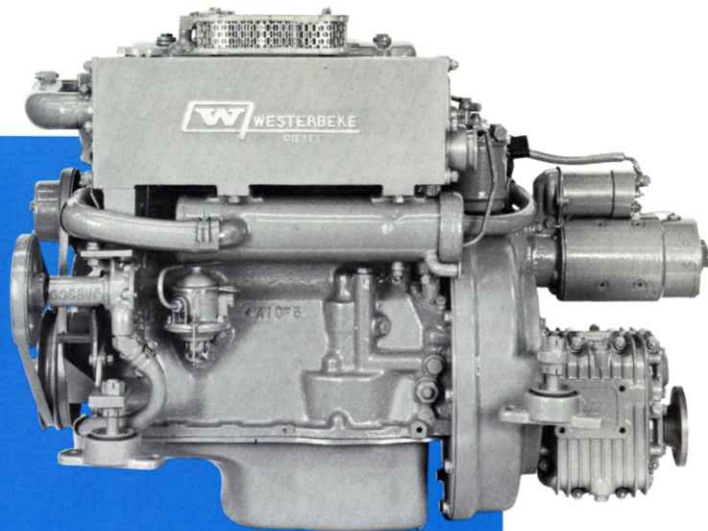
OPTIONAL EQUIPMENT

High efficiency primary fuel filter; front opening exhaust manifold, water injected exhaust elbow, Hydro-Hush stainless steel waterlift muffler, flexible stainless steel exhaust section; sea water strainer, remote fresh water expansion tank; front end lube oil fill; pre-wired all-electric instrument panel with 10' cable, extra 10' cable for instrument panel or start panel; high water temperature, low oil pressure alarm system; 5 $\frac{1}{2}$ " diameter crankshaft-mounted accessory pulley; flexible shaft coupling; special engine mounts; spare parts kits.



**WESTERBEKE 30
with Westerbeke 2:1
Short Profile Sailing Gear.**

**Ask for a Westerbeke.
There's always one
to fit your boat.**



**WESTERBEKE 30
with Paragon SAOV vee drive
and front end exhaust
with water injection elbow**

The drawings and photographs of the WESTERBEKE 30 show a compact marine diesel that is easily serviced. Starter, alternator, lube oil and fuel filters and fuel pump are all mounted high on the block for ease in servicing, particularly in installations under the cockpit or cabin sole. This also protects them from sloshing bilge water. Every effort has been made to give you an engine as easy to install and as easy to maintain as possible.

The WESTERBEKE 30 is one of the smoothest, quietest marine diesels, because of its four cylinder design, its specially calculated flywheel, and the efficient Ricardo Comet combustion system.

If you're shopping around, first think about diesel safety and Westerbeke reliability. Then think about the smoothness of the WESTERBEKE 30. Compare the standard features and highly practical accessories of this engine against any other engine in the world. Off-shore or inshore, you'll be glad you specified Westerbeke.

Westerbeke engines and accessories are sold and serviced by Westerbeke distributors in major port cities throughout the United States.



J. H. WESTERBEKE CORP.

AVON INDUSTRIAL PARK, AVON, MASS. 02322 • (617) 588-7700

CABLE: WESTCORP, AVON • TELEX: 92-4444